

ETS-T50

High performance CPU air cooler



ETS-T50A-DFP

 **ENERMAX**

ETS-T50 AXE

High performance CPU air cooler

- Powerful 250W+ TDP support
- Super high static pressure of the fan up to 4.812mm-H₂O
- Patented Dust Free Rotation (DFR™) technology fan
- Patented Pressure Differential Flow (PDF) design
- Patented Rotatable Air Guide

ETS-T50A-DFP, a variant of ETS-T50 AXE coolers, is equipped with an ENERMAX D.F. PRESSURE fan that can generate high static pressure up to 4.812mm-H₂O. This high-performance side-flow CPU cooler features patented Dust Free Rotation fan technology, Pressure Differential Flow design and 5 x Ø6mm heat pipes, offering users an outstanding cooling solution with powerful 250W+ TDP support. The included Rotatable Air Guide is a smart gadget for airflow direction adjustment. Last but not least, the fan comes with the patented smart APS (Adjustable Peak Speed) control to satisfy different users' cooling needs and achieve a perfect balance between cooling performance and silent operation.

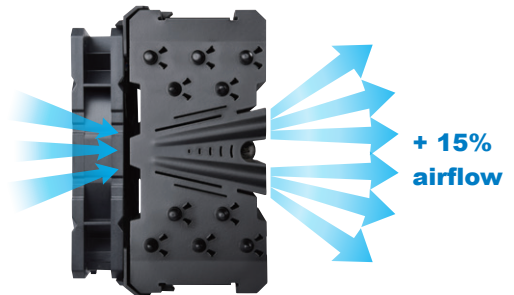


ETS-T50A-DFP

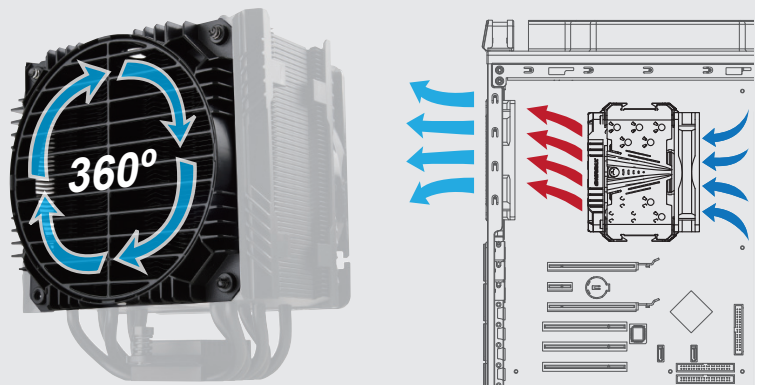
Features

Patented PDF (Pressure Differential Flow) design

By using differential wind pressure, the PDF design is to squeeze the air flow to pass through the cone-shaped tunnel rapidly. This patented design can help increase 15% more airflow and enhance the cooling performance.



Patented Air Guide with rotatable grill for preferred airflow direction adjustment directly toward the rear case fan area



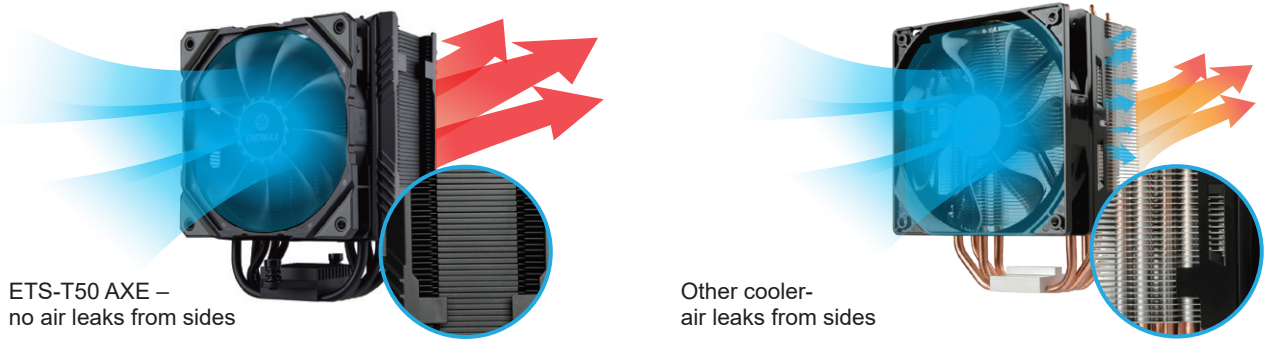
Asymmetric heat pipe design allows extra space for ideal RAM compatibility



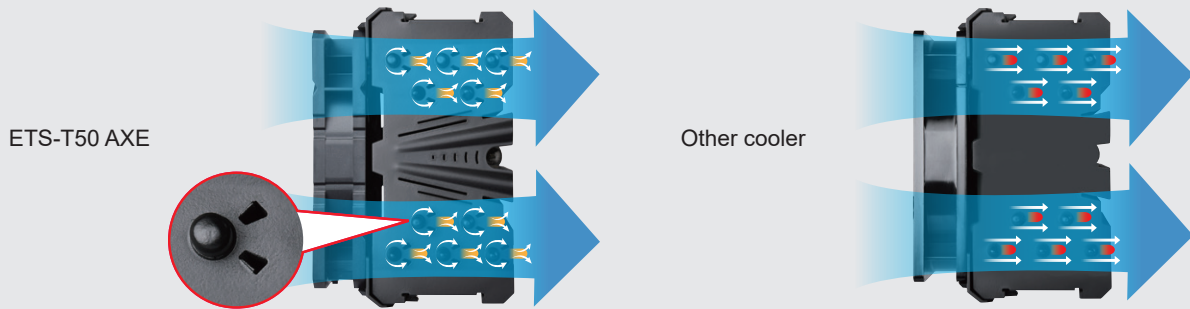
Patented DFR™ (Dust Free Rotation) technology* instantly blows away the dust to prolong the lifespan



Unique air path creating high VEF (Vacuum Effect) to optimize the airflow

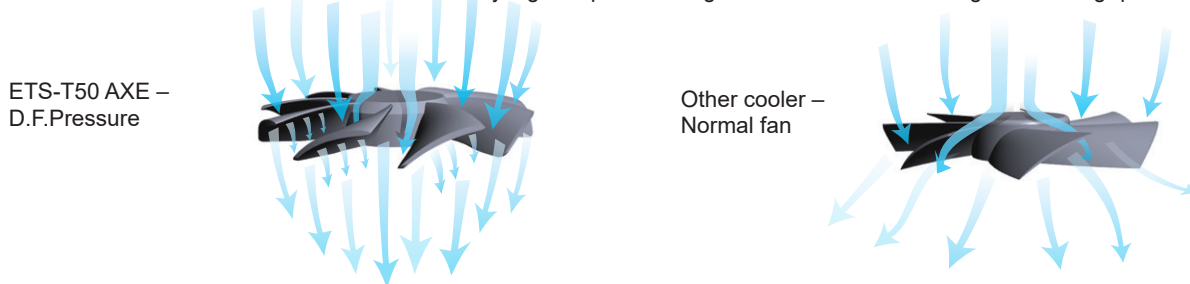


Patented VGF (Vortex Generator Flow) to increase air convection around the heat pipe



High Pressure Technology

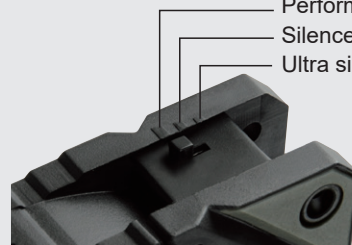
High pressure blade design is a precision engineering of the blade angle and shape calculation. The blades centralize dispersed air flow to the center of the fan and create extremely high air pressure high airflow while maintaining outstanding quietness.



Patented APS (Adjustable Peak Speed) control providing 3 peak rpm options

3-Cooling modes:

- Performance mode: 800~2000 RPM
- Silence mode: 800~1500 RPM
- Ultra silence mode: 800~1000 RPM

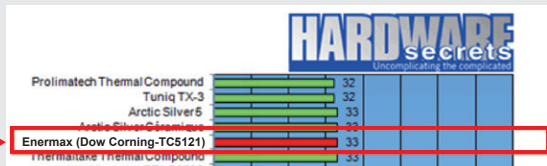


- ▼ HDT (Heat-pipe Direct Touch) technology to ensure rapid thermal conduction and eliminate CPU hot spots

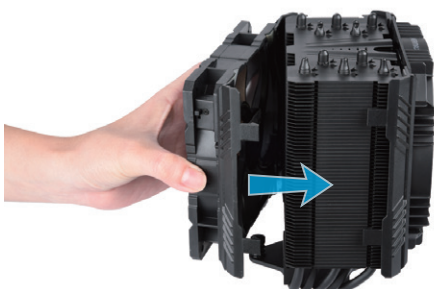


- ▼ Gen. 2 TCC (Thermal Conductive Coating) creates better velocity of thermal transferring and prevents oxidation

- ▼ Dow Corning® TC-5121 (3g) thermal grease for perfect thermal conduction between CPU and the heat sink



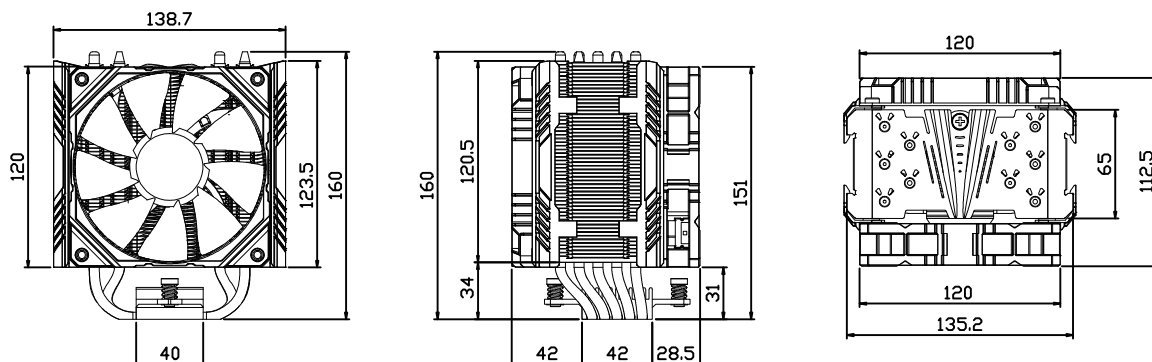
Source: Hardware secrets(2011)
ENERMAX (Dow Corning-TC5121) compound performed wonderfully.



- ▼ “1-clip” fan bracket design for user-friendly installation

Dimension

unit:mm



Specifications

ETS-T50A-DFP

Compatible Socket	Intel® LGA 1851/1700/2066/2011-3/2011/1366/1200/1156/1155/1151/1150 AMD® AM4/AM3+/AM3/AM2+/AM2/FM2+/FM2/FM1		
Overall Dimension	138.7(L) x 112.5(W) x 160(H) mm		
Heat Sink Dimension	135.2(L) x 65(W) x 160(H) mm		
Weight	860g (w/ fan)		
Heat Pipe	5 x Ø6 mm		
Material	Copper Heat Pipes / Aluminum Fins		
Thermal Grease	Thermal grease included		
Fan Dimension	120 x 120 x 25 mm		
Fan Speed (RPM)	800 ~ 1000	800 ~ 1500	800 ~ 2000
Air Flow (CFM)	33.69 ~ 42.30	33.69 ~ 66.87	33.69 ~ 85.43
Air Flow (m³/h)	57.24 ~ 71.87	57.24 ~ 113.61	57.24 ~ 145.15
Static Pressure (mm-H ₂ O)	0.819 ~ 1.358	0.819 ~ 2.701	0.819 ~ 4.812
Noise (dBA)	16 ~ 18	16 ~ 23	16 ~ 27
Rated Voltage	12V		
Bearing Type	Twister Bearing		
MTBF	≥ 160,000 hours		
Connector	4 pin PWM connector		

Shipping Information

Barcode	EAN:4713157722720 / UPC:816163008940
Box Dimension	222 x 175 x 130 mm
Gross Weight / box	1390g
Carton Dimension	460 x 370 x 295 mm
Gross Weight / Carton	12.5kg (8 units per carton)